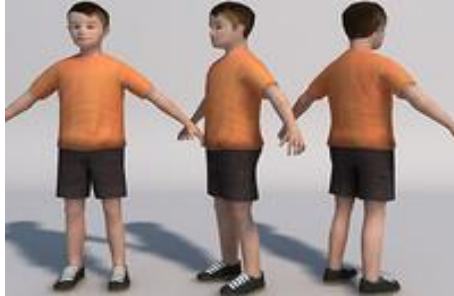
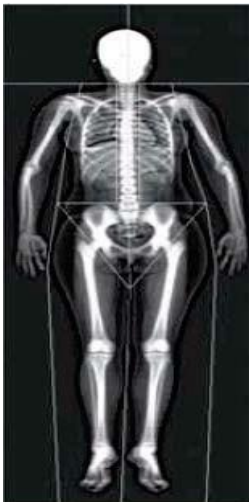


PARTICIPANTS NEEDED!

UNIVERSITY OF HAWAII RESEARCHERS NEED YOUR HELP TO UNDERSTAND HEALTH FROM BODY SHAPE!



“Shape Up! Kids” is a nationwide study of how childhood and adolescent body shape relates to health. Your participation will help us find quick and accessible ways to measure health using body shape.



During your one-time visit you will receive:

- **Bone Density Scan**
- **Body Shape Measurements**
- **Magnetic Resonance Imaging (MRI)**
- **Muscle Strength Tests**
- **Blood Sample**

Contact us at (808) 440-5234 or bodycompstudies@cc.hawaii.edu

**AGES 5-17
GIRLS AND BOYS**

**RECEIVE A GIFT CARD
FOR YOUR TIME**

**ONE-TIME VISIT,
WEEKEND
AVAILABILITY**

**FREE BODY
COMPOSITION AND
HEALTH MARKER
REPORTS**

**3D PRINTED ACTION
FIGURE OF YOURSELF**

NO COST TO YOU

**UNIVERSITY OF HAWAII
CANCER CENTER**

701 Ilalo Street
Honolulu, HI 96813
808-440-5234

Shape Up
Shape of Health

